

# Technical data sheet



## Product features

### Freezing cabinet 1400 l GN 2/1, stainless steel

<b>Model</b>	<b>SAP Code</b>	00006117
--------------	-----------------	----------



- GN / EN size in device: GN 2/1
- Chamber volume [l]: 1400
- Minimum device temperature [°C]: -18
- Maximum device temperature [°C]: -22
- Insulation thickness [mm]: 60
- Automatic defrost: Yes
- Annual energy consumption [kWh]: 4625

<b>SAP Code</b>	00006117	<b>Gross Volume [m3]</b>	2.806
<b>Net Width [mm]</b>	1388	<b>Net Volume [m3]</b>	2.302
<b>Net Depth [mm]</b>	826	<b>Number of GN / EN</b>	6
<b>Net Height [mm]</b>	2008	<b>GN / EN size in device</b>	GN 2/1
<b>Net Weight [kg]</b>	187.00	<b>Minimum device temperature [°C]</b>	-18
<b>Power electric [kW]</b>	1.759	<b>Maximum device temperature [°C]</b>	-22
<b>Loading</b>	230 V / 1N - 50 Hz	<b>Refrigerant</b>	R290
<b>Energy class</b>	E	<b>Climate class</b>	4
<b>Chamber volume [l]</b>	1400		

# Technical data sheet



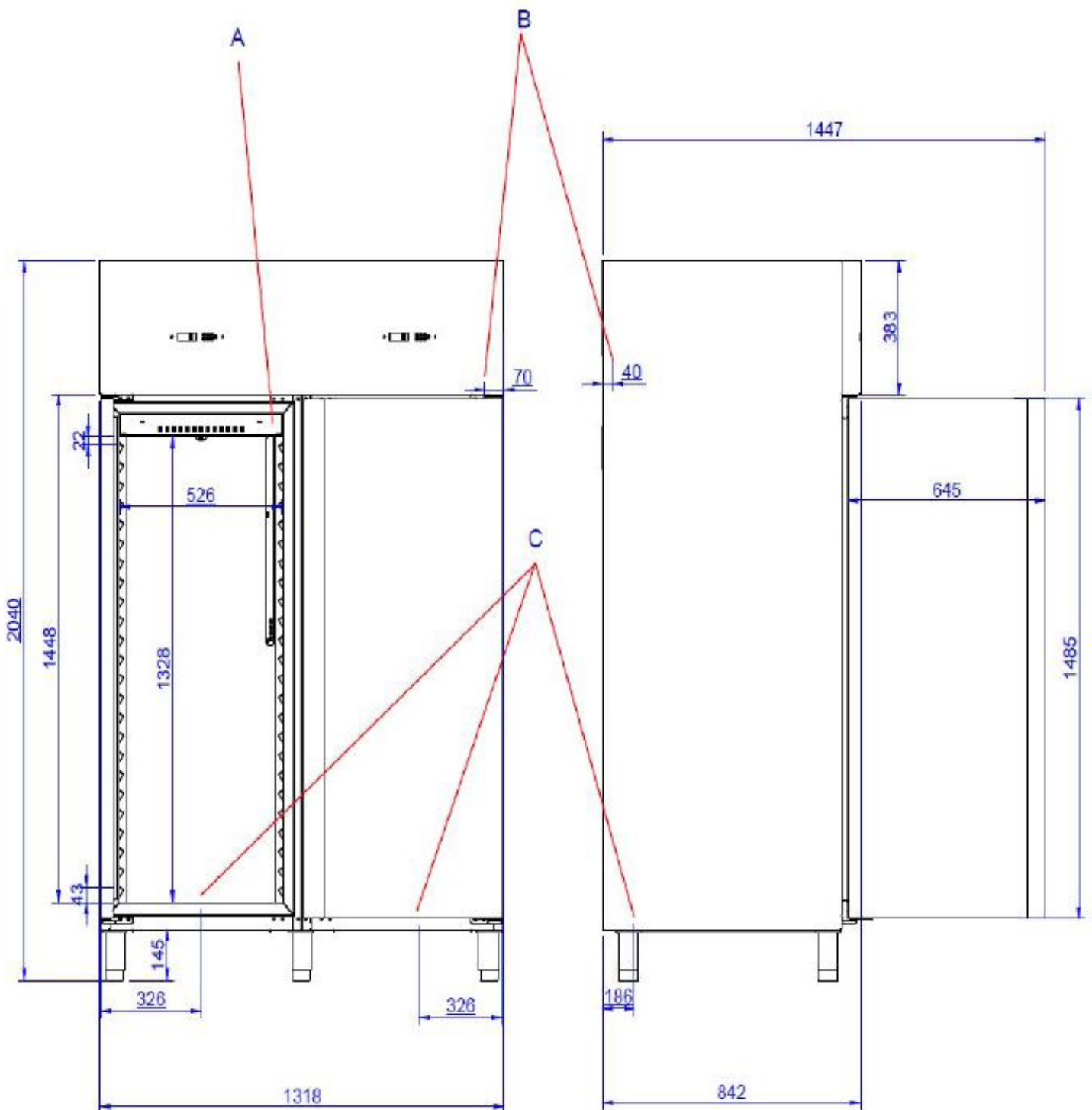
Technical drawing

Freezing cabinet 1400 l GN 2/1, stainless steel

Model

SAP Code

00006117



# Technical data sheet



## Product benefits

### Freezing cabinet 1400 l GN 2/1, stainless steel

Model

SAP Code

00006117

1

#### Insulation 60mm

minimal heat loss

- saving electricity
- less wear and tear on the compressor due to less frequent switching

2

#### Two-sided opening

possibility to change the opening from the right to the left side

- greater variability of use

3

#### All-stainless design

outer shell

only stainless steel intended for food contact is used

good maintenance

zero contamination

resists even weaker acids

- long service life and high durability

4

#### Automatic defrosting

maintenance-free operation

continuous defrosting

- zero requirement for frost control by the operator

5

#### Height adjustable feet

maintenance-free operation

continuous defrosting

- precise positioning of the fridge in uneven floors, ensures correct operation of the unit thanks to the balance

# Technical data sheet



## Technical parameters

### Freezing cabinet 1400 l GN 2/1, stainless steel

**Model**

**SAP Code**

00006117

**1. SAP Code:**

00006117

**2. Net Width [mm]:**

1388

**3. Net Depth [mm]:**

826

**4. Net Height [mm]:**

2008

**5. Net Weight [kg]:**

187.00

**6. Gross Width [mm]:**

1450

**7. Gross depth [mm]:**

900

**8. Gross Height [mm]:**

2150

**9. Gross Weight [kg]:**

206.00

**10. Device type:**

Electric unit

**11. Power electric [kW]:**

1.759

**12. Loading:**

230 V / 1N - 50 Hz

**13. Energy class:**

E

**14. Refrigerant:**

R290

**15. Cooling type:**

Dinamic

**16. Material:**

Stainless steel

**17. Min ambient temperature [°C]:**

10

**18. Max ambient temperature [°C]:**

43

**19. Device properties 2:**

Freezing

**20. GN / EN size in device:**

GN 2/1

**21. Number of GN / EN:**

6

**22. Chamber volume [l]:**

1400

**23. Gross Volume [m3]:**

2.806

**24. Net Volume [m3]:**

2.302

**25. Adjustable feet:**

Yes

**26. Insulation thickness [mm]:**

60

**27. Number of doors:**

2

**28. Unit:**

Yes

# Technical data sheet



Technical parameters

Freezing cabinet 1400 l GN 2/1, stainless steel

Model

SAP Code

00006117

**29. Annual energy consumption [kWh]:**

4625

**33. Thaving cycle:**

Yes

**30. Minimum device temperature [°C]:**

-18

**34. Number of grids:**

6

**31. Maximum device temperature [°C]:**

-22

**35. Climate class:**

4

**32. Automatic defrost:**

Yes

**36. Cross-section of conductors CU [mm<sup>2</sup>]:**

0,5

- Výkon (kW): 2,4-3,3 (230 V)